

# **9<sup>th</sup> Grade Presentation**

# **Class of 2028**

Welcome to Perry!

---

# AGENDA

- **Graduation Requirements/In-state University Requirements**
  - **10<sup>th</sup> Grade Registration**
  - **Transcript Information**
  - **Advanced Placement**
  - **Dual Enrollment**
  - **SAT, ACT**
  - **Test Preparation**
  - **Keys for Academic Success**
  - **Career Center**
  - **Social/Emotional Support (Wellness Room)**
-

# PHS Counseling Dept. 24-25



Trisha Stall, Counseling Secretary



Holli Cagle, A-Daw



Kimberly Leas, Dax - Hor



Scott Uyeshiro, Hos - Mon



Geri Jaramillo - Testing Coordinator



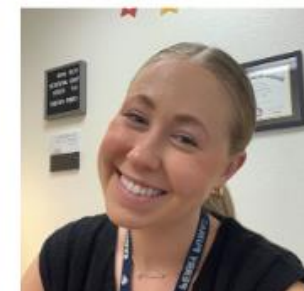
Kim Kwong - Career Ctr Specialist



Kirstin Gregg, Moo - Sin



Fred Mann, Sio - Z & STEM



Skylar Gardner - Social Worker

# 4-YEAR PLAN – PERRY HIGH SCHOOL

Curriculum Area	CUSD Graduation Requirements	In-State University Credits
ENGLISH	4	4
MATH	4	4
LAB SCIENCE	3	3
SOCIAL STUDIES	3	2
FINE ARTS/CAREER TECH	1	1
WORLD LANGUAGE	0	2
P.E.	1	0
COMPREHENSIVE HEALTH	0.5	0
REQUIRED COURSES	16.5	16
ELECTIVE COURSES	5.5	0
TOTAL REQUIRED COURSES	22	16
	and pass Civics Test	

# Start thinking about 10<sup>th</sup> Grade!!

Registration starts 2<sup>nd</sup> semester!

- 3 core classes (English, Math, Science)
  - Comprehensive Health (1 semester)
  - 2.5 electives
  - Zero hour, online options
-





# Understanding AP

- Next step after Honors courses
  - Weighted grade
  - Prepares you for college
  - Looks good on college application, rigor is higher than on level classes
  - Chance to earn college credit
  - Not guaranteed credit
  - <https://www.cusd80.com/site/Default.aspx?PageID=21080>
-



# Dual Enrollment



- Earn college credit while attending high school classes
- Earn college credit that can fulfill many university general studies requirements. Check out page all about Dual Enrollment. It shows how courses transfer from community college to ASU, NAU and U of A
- *\*\*Be aware that the transferability of a course does not indicate how the course will apply to meet requirements for specific bachelor's degrees.*
- Pay community college prices for university-level classes
  - (\$91 per credit hour)

<https://www.cusd80.com/site/Default.aspx?PageID=76539>

---



# Test Prep

## *Several Options for Students*

- **Chandler Community Education** (At various CUSD Sites)
- **Khan Academy/College Board Partner** offers FREE SAT PREP
- **Kaplan** (PSAT fall, ACT, spring)
- **Princeton Review**
- **Sylvan Learning**
- **Maricopa Libraries** offers quick access to all online practice tests



# Tips for Academic



- **Plan ahead – The in-state universities look at the core unweighted GPA**
- **Keep grades up! A “D” is considered a deficiency**
- **Get involved, stay involved –quality over quantity**
- **Obtain leadership positions**
- **Get informed about options –colleges, scholarships, trade schools**
- **Get to know your teachers and counselor**

# COLLEGE & CAREER CENTER INTRO



*Visit the [College & Career Center Website](#) for Scholarships, Recruiter Events, and More*

Ms. Kim Kwong - F219

[Kwong.kim@cusd80.com](mailto:Kwong.kim@cusd80.com)

<https://www.cusd80.com/Domain/3285>

Updates via Parent/[StudentSquare](#)  
&

Instagram @ [perry\\_college\\_career](#), Remind @ cccf2027

Join the Perry College Club (Connect4College): Remind @ Connect4co

Get out there!  
The world is waiting.

# Welcome to our College & Career Center

Resume Building

Mock Interviews

College Rep Visits

Volunteer Opportunities

Action Plan

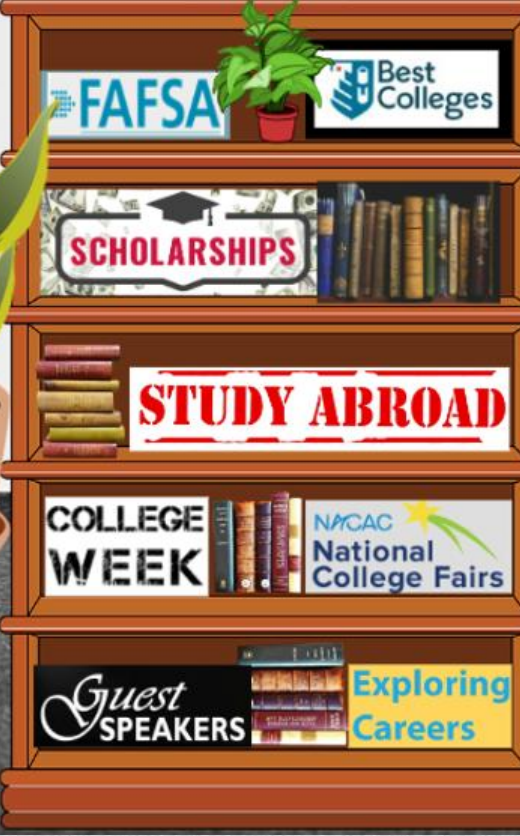
**Jobs!**  
For students



PHS Career Center  
perry\_college\_career

Ms. Kim Kwong

College & Career Center Website



# COLLEGE PLANNING - FRESHMAN



- Meet with your College & Career Advisor – stop in F219!
- Grades matter now
- Meet with your counselors to develop your 4 year high school plan
- Start thinking about life after school (this could and will change often)
- Take your PSAT every year
  - Great practice for when it matters - Junior year (National Merit Scholarships, etc), SAT/ACT
- Do something fun with focus on passion & dedication – join clubs, sports, volunteer!
- Explore summer programs
  - <https://colleg Gazette.com/best-summer-programs-in-arizona-for-high-school-students/>
  - <https://blog.collegevine.com/summer-programs-in-arizona-for-high-schoolers/>
- Check out Colleges with full ride scholarships
  - [80 Colleges With Full-Ride Scholarships \(prepscholar.com\)](http://80CollegesWithFull-RideScholarships.prepscholar.com)
- Create accounts with separate email & get started on college prep & scholarships – it's not too early!
  - <https://www.goingmerry.com/>
  - <https://bigfuture.collegeboard.org/>



# **CEF IMPACT SCHOLARS PROGRAM**

## **HOW WILL YOU MAKE AN IMPACT ON OTHERS?**

### **Registration into IMPACT Scholars Program**

- Log into Infinite Campus, click on MORE
- Click on ICS to register as a participant in the program

### **Requirements**

- Finish and Graduate with a 3.4 GPA
- Attend school 95% of the time!
- Perform 100 hours of community service (volunteer hours) , can not be religious based (refer to the Program Criteria and Guidelines for activities that are eligible for submission).

### **Logging hours**

- Log into Infinite Campus, click on More
- Click on IMPACT Chandler Scholars to log hours
  - Only hours conducted during the current academic year are accepted.
  - No more than 10 hrs/day

### **What do you get?**

- A beautiful orange cord that you will wear at graduation. Walking across the stage standing tall and proud.
- The opportunity to apply to become an IMPACT Scholarship winner. \$1000 dollars for those who apply during your Senior Year and qualify.



# UPCOMING EVENTS



- CUSD District Wide College Fair – Sept 18<sup>th</sup> @ Hamilton High 6-8 pm
- In State College Visitors @ Perry F219 – Conference Period
  - UofA – Aug 7
  - GCU – Aug 8
  - NAU – Aug 15
  - ASU – Aug 22
- NACAC College Fair – Sept 15<sup>th</sup> @ the Phoenix Convention Center
- Perry High College Week – Oct 21-24<sup>th</sup>
  - Campus visits by colleges, technical trades & military
  - Daily dress up in “Theme of the Day”
    - Monday – In State University Gear – ASU, UofA, GCU, NAU
    - Tuesday – College Sports Apparel
    - Wednesday – Out of State University Apparel
    - Thursday – Dress to Impress Professional Attire
  - Thursday Door Decorating Contest – Top 3 winning classrooms get prize
- ASVAB test in Perry auditorium Jan 15, 2025 - Determine your strengths & interests!



# BRIEF DEMO

- College & Career Website
  - Perry College & Career Center
- Welcome
  - Events
- Life after Perry
  - Self Assessments
- College Bound
  - In State Merit Scholarships
- Paying for College
  - FB pages
- Resume Building Activities
  - Summer Programs

The screenshot shows the Perry High School website's College and Career Center. The header includes the school logo, name, and contact information. The navigation menu lists various site sections. The sidebar on the left provides a detailed tree view of the 'College and Career Center' content, including categories like 'Welcome', 'Life after Perry', 'College Bound', 'Paying for College', and 'ACT/SAT'. The main content area features a video player titled '2024 PHS Graduate Spotlights' with a video of a student. Below the video is the text 'Plan Your Future in F219!'. The right sidebar contains a 'Visitors & Events' section with a calendar of upcoming events for July and August.

**College and Career Center**

- Welcome
- Life after Perry
- College Bound
  - Class of 2024 College Bound Timeline
  - The College Application Process
    - + Arizona Colleges
    - Historically Black Colleges & Universities (HBCU)
    - College Tours
  - Paying for College
    - CEF/IMPACT
    - Neely Foundation Scholarship
    - WUE: Discounted Out-of-State Option
    - Full Ride Scholarships
  - ACT/SAT
  - Tools & Forms

**2024 PHS Graduate Spotlights**

Plan Your Future in F219!

**Visitors & Events**

July **25**  
Senior ECAP - F219\*\*  
5:00 pm - 8:30 pm  
Freshman & Senior Parent Night - Auditorium

August **7**  
9:15 am - 10:00 am  
UofA Admissions Process - F219\*\*

August **8**  
9:15 am - 10:00 am  
CCU Admissions Process - F219\*\*

August **15**  
9:15 am - 10:00 am  
NAU Admissions Process - F219\*\*

August **22**  
9:15 am - 10:00 am  
ASU Admissions Process - F219\*\*





SOMEBODY  
WHO MAKES

**EVERYBODY**

FEEL LIKE  
SOMEBODY



# **SOCIAL/EMOTIONAL SUPPORT**

Skylar Gardner, School Social Worker

Email:gardner.skylar@cusd80.com

Phone:480-224-3044

---

- Extension of the counselors
  - Social/emotional support
- Student support
  - Stress
  - Anxiety
  - Depression
  - Problem solving/conflict resolution
- Teacher and parent support
  - Collaborate with teachers and parents to help student be successful
- Mindfulness room
- Counseling groups

# **Role of the Social Worker**

---

## What is it

---

- A safe place for ALL students to come
  - For those that have any social, emotional or mental health need
  - Open during lunch and after school to all students

## The Goal

---

- Provide a calm and welcoming environment
- Provide support
  - Give students the tools needed to overcome their challenges and return to class ready to learn and able to achieve.
- Identify coping skills

# Wellness Room

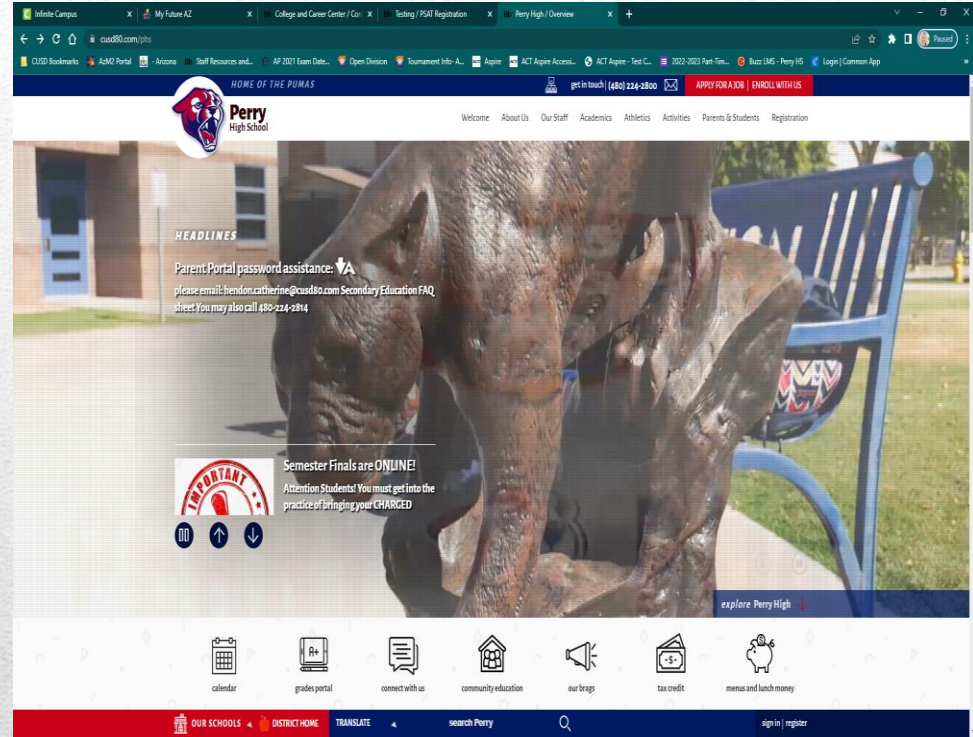
---

# Wellness Room



Stay informed, check our website once a week and sign-up for Parent Square.

<https://www.cusd80.com/phs>



# Thank you!